

# Nora's Garden

SHAUNA DORIS



Trellis Quilt designed by: **Shauna Doris**

Quilt Size: **76<sup>3</sup>/<sub>8</sub>" x 76<sup>3</sup>/<sub>8</sub>"** • Skill Level: **Intermediate**

# Trellis Quilt

Introducing Andover Fabrics new collection: **Nora's Garden** by Shauna Doris  
Quilt designed by Shauna Doris

Quilt finishes 76<sup>3</sup>/<sub>8</sub>" x 76<sup>3</sup>/<sub>8</sub>"

*The lovely palette and unusual mixture of prints are the stars in this queen-size coverlet. The diagonal set adds a dynamic quality to the design. Simple pieced sashes and cornerstone squares set off each print with style.*

## Cutting Directions

**Note:** Read assembly directions before cutting patches. All measurements are cut sizes and include 1/4" seam allowances. A fat 1/4 is an 18" x 20"-22" cut. WOF designates the width of fabric from selvedge (approximately 42" wide).

### Fabric A

Cut (6) squares 6<sup>1</sup>/<sub>2</sub>", cut on point (Read Step 1 before cutting.)

Cut (1) square 7" on straight of grain, cut in half diagonally to make 2 triangles (only 1 triangle is needed)

Cut (1) square 5<sup>1</sup>/<sub>4</sub>" on straight of grain, cut in half diagonally to make 2 corner triangles

### Fabric B

Cut (8) squares 6<sup>1</sup>/<sub>2</sub>", cut on point (Read Step 1 before cutting.)

### Fabric C

Cut (5) squares 6<sup>1</sup>/<sub>2</sub>"

Cut (1) square 7", cut in half diagonally to make 2 triangles

### Fabric D

Cut (6) squares 5<sup>1</sup>/<sub>2</sub>", cut in half diagonally twice to make 24 quarter-square triangles

Cut (60) rectangles 1<sup>1</sup>/<sub>2</sub>" x 3<sup>1</sup>/<sub>2</sub>"

Cut (60) squares 1<sup>1</sup>/<sub>2</sub>"

### Fabric E

Cut (6) squares 6<sup>1</sup>/<sub>2</sub>"

Cut (1) square 7", cut in half diagonally to make 2 triangles

### Fabric F

Cut (5) squares 6<sup>1</sup>/<sub>2</sub>"

Cut (1) square 7", cut in half diagonally to make 2 triangles

### Fabric G

Cut (6) squares 6<sup>1</sup>/<sub>2</sub>"

Cut (60) squares 1<sup>1</sup>/<sub>2</sub>"

### Fabric H

Cut (4) squares 6<sup>1</sup>/<sub>2</sub>"

Cut (2) squares 7", cut in half diagonally to make 4 triangles total

### Fabric I

Cut (4) squares 6<sup>1</sup>/<sub>2</sub>"

### Fabric J

Cut (4) squares 6<sup>1</sup>/<sub>2</sub>"

Cut (2) squares 7", cut in half diagonally to make 4 triangles (only 3 triangles are needed)

Cut (1) square 5<sup>1</sup>/<sub>4</sub>", cut in half diagonally to make 2 corner triangles

## Fabric Requirements

		Yardage	Fabric
<b>Fabric A</b>	set	3/4 yard	904-B
<b>Fabric B</b>	set	3/4 yard	904-G
<b>Fabric C</b>	set	fat 1/4	905-B
<b>Fabric D</b>	set	3/4 yard	905-L
<b>Fabric E</b>	set	1/2 yard	905-Y
<b>Fabric F</b>	set	fat 1/4	906-G
<b>Fabric G</b>	set	3/8 yard	906-O
<b>Fabric H</b>	set	fat 1/4	906-P
<b>Fabric I</b>	set	fat 1/4	907-G
<b>Fabric J</b>	set	3/8 yard	907-P
<b>Fabric K</b>	set	fat 1/4	907-Y
<b>Fabric L</b>	set	fat 1/4	908-B
<b>Fabric M</b>	set	1/2 yard	908-L
<b>Fabric N</b>	set	fat 1/4	908-O
<b>3 Lights</b>	sashes	1/4 yards each	
	909-G	909-L	909-P
<b>Binding</b>		5/8 yard	909-G
<b>Backing</b>		5 yards	905-L

### Fabric K

Cut (3) squares 6<sup>1</sup>/<sub>2</sub>"

Cut (1) square 7", cut in half diagonally to make 2 triangles

### Fabric L

Cut (5) squares 6<sup>1</sup>/<sub>2</sub>"

Cut (1) square 7", cut in half diagonally to make 2 triangles

### Fabric M

Cut (60) rectangles 1<sup>1</sup>/<sub>2</sub>" x 3<sup>1</sup>/<sub>2</sub>"

Cut (60) squares 1<sup>1</sup>/<sub>2</sub>"

### Fabric N

Cut (5) squares 6<sup>1</sup>/<sub>2</sub>"

Cut (1) square 7", cut in half diagonally to make 2 triangles

**3 Lights** From each for sashes

Cut (144) rectangles 1<sup>1</sup>/<sub>2</sub>" x 6<sup>1</sup>/<sub>2</sub>"

### Binding

Cut (8) strips 2<sup>1</sup>/<sub>2</sub>" x WOF for binding

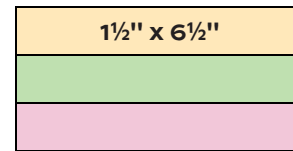
### Backing

Cut (2) lengths 42" x 84", pieced to fit quilt top with overlap on all sides

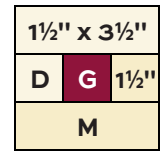
# Trellis Quilt

## Making the Quilt

1. Fabrics A and B have motifs that should be upright when stitched into the quilt. Therefore, cut each A and B  $6\frac{1}{2}$ " square on point, snuggling the squares close to one another to conserve fabric. Cut the Fabric A  $7$ " and  $5\frac{1}{4}$ " squares on the straight of grain. All other  $6\frac{1}{2}$ " squares are cut on straight of grain.
2. Referring to the Sash diagram, join 3 light rectangles in the order shown. The rectangle should measure  $3\frac{1}{2}$ " x  $6\frac{1}{2}$ ". If it does not, adjust your stitching or pressing. Make 144 sashes.
3. Referring to the Cornerstone diagram, sew Fabric D and Fabric M patches to a Fabric G center. The unit should measure  $3\frac{1}{2}$ " square. Make 60 Cornerstones like this.
4. Refer to the Quilt Assembly and quilt photograph for the following steps. On a large flat surface, arrange the  $6\frac{1}{2}$ " squares and sashes in diagonal block rows, leaving space between rows to add the sash rows in Step 5. Refer to the Color Placement diagram when arranging the sashes between each square. Add the appropriate triangles cut from the  $7$ " squares at ends of each row. Be careful to rotate the end triangles as shown.
5. Position the cornerstones and sashes to make sash rows between the block rows, again noting the rotation of the colors of the sashes. Add a Fabric D triangle at the end of each sash row, again noting rotation. Look through a camera or the wrong end of binoculars to check fabric placement. Once you are satisfied, join the parts into diagonal block and sash rows. Finally, join the rows, alternating types.
6. Make 4 Corner Units, referring to the Quilt Assembly for the color placement of each sash. Sew a Corner Unit to each corner.
7. Trim the edges of all sides if needed, leaving  $\frac{1}{4}$ " seam allowances along the edge. Use a short machine stitch to "stay stitch" all around the outer edge to prevent the bias patches stretching.



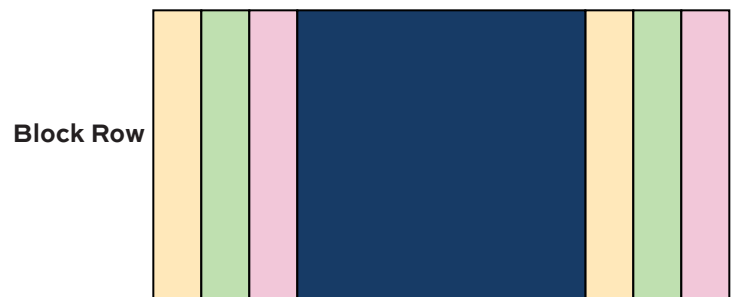
Sash – Make 144



Cornerstone  
Make 60



Sash Row

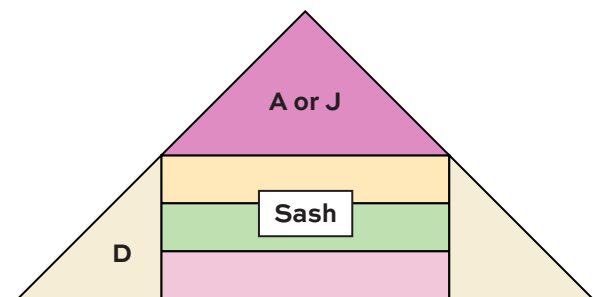


Block Row



Sash Row

Color Placement

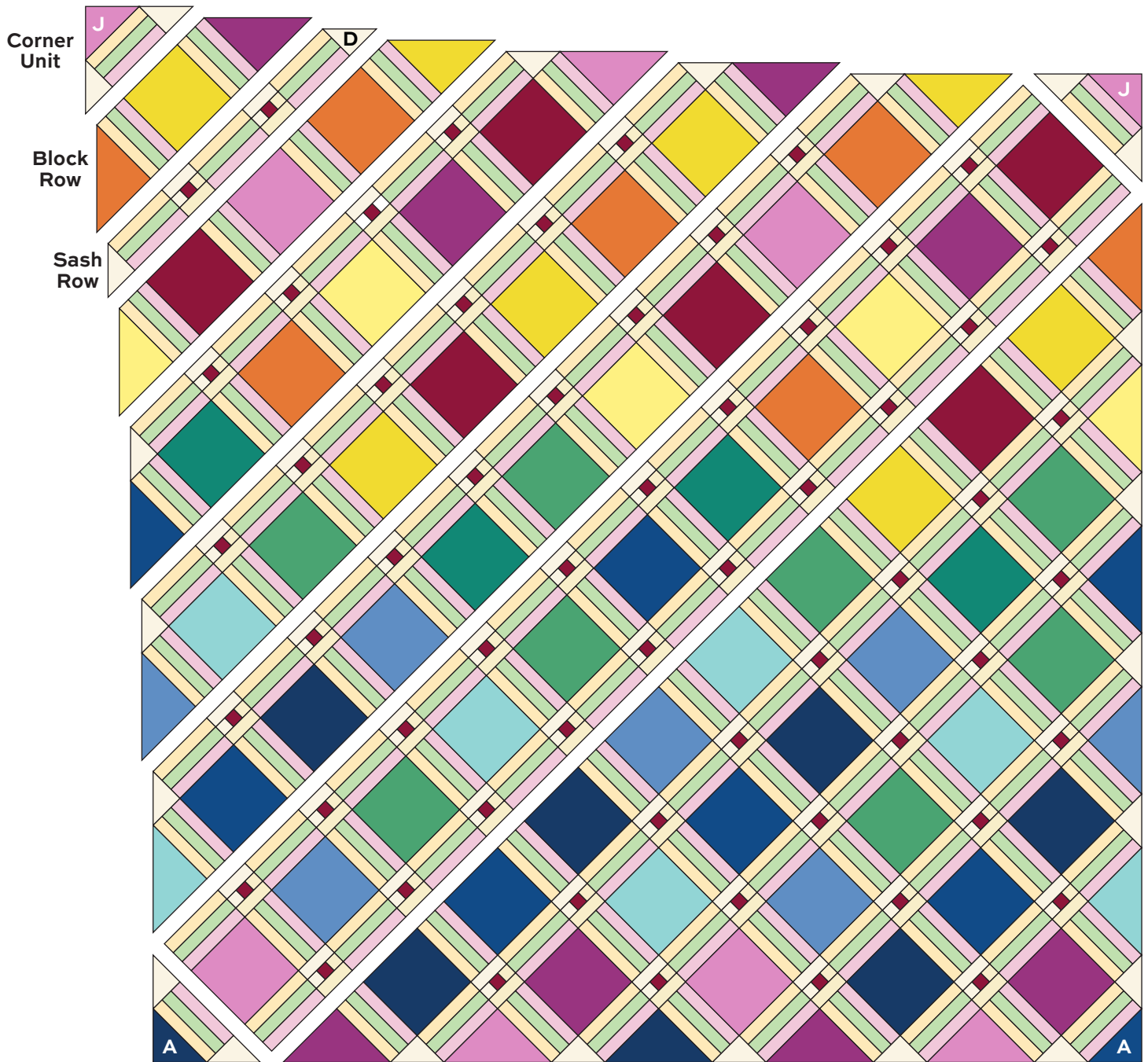


Corner Unit – Make 4

## Finishing the Quilt

8. Layer the quilt with batting and backing and baste. Quilt in the ditch around patches. Quilt the large squares as desired. Bind to finish the quilt.

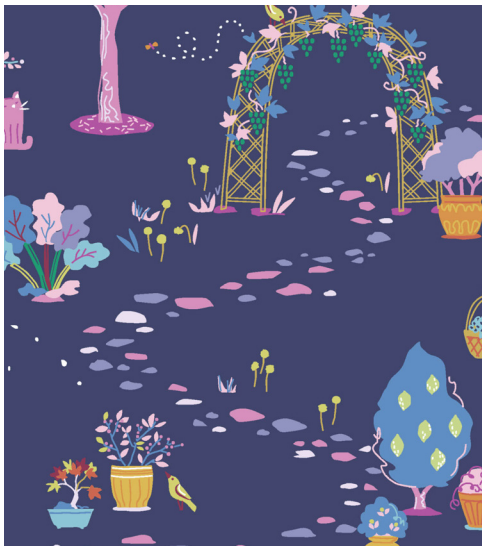
# Trellis Quilt



Quilt Assembly

# Nora's Garden

SHAUNA DORIS



904-B



905-B



905-L



905-Y



906-G



906-O



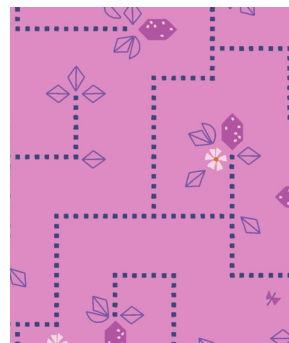
906-P



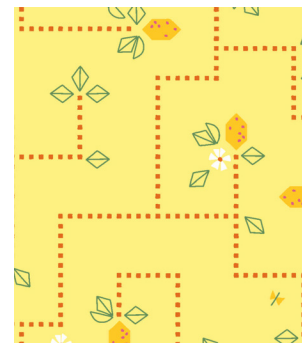
904-G



907-G



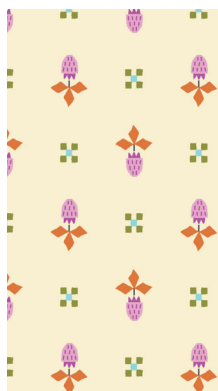
907-P



907-Y



908-B



908-L



908-O



909-G



909-L



909-P

All fabrics are used in quilt pattern. Fabrics shown are 50% of actual size.